



Light SPECS LIST **Big VENUE:**

FOH-CONSOLE:

Avolites Titan Quartz V10
Avolites Titan Wing / Extension

Dimmer Racks:

3x ADB 24channels (3kW per Channel)

Light on the Stage Truss / See Light Plan:

8x Robe Colorwash 250at
3x Robe Colorspot 250at
4x Robe Robin 300 E Spot
12x Litecraft Led Pars AT3
10x ADB PC 2kW
3x ADB PC 1kW
2x Set of 4-lites Blinders
1x Set of ACL

Floor Light:

Possibly to put 6 Totem with 2m height
2x Robe Robin 300E Spot
4x 8-lites Blinders
4x Floor Cans CP 60
4x Spare Dimmer Channel
1x Spare DMX-Line

Light on the Front Truss / See Light Plan:

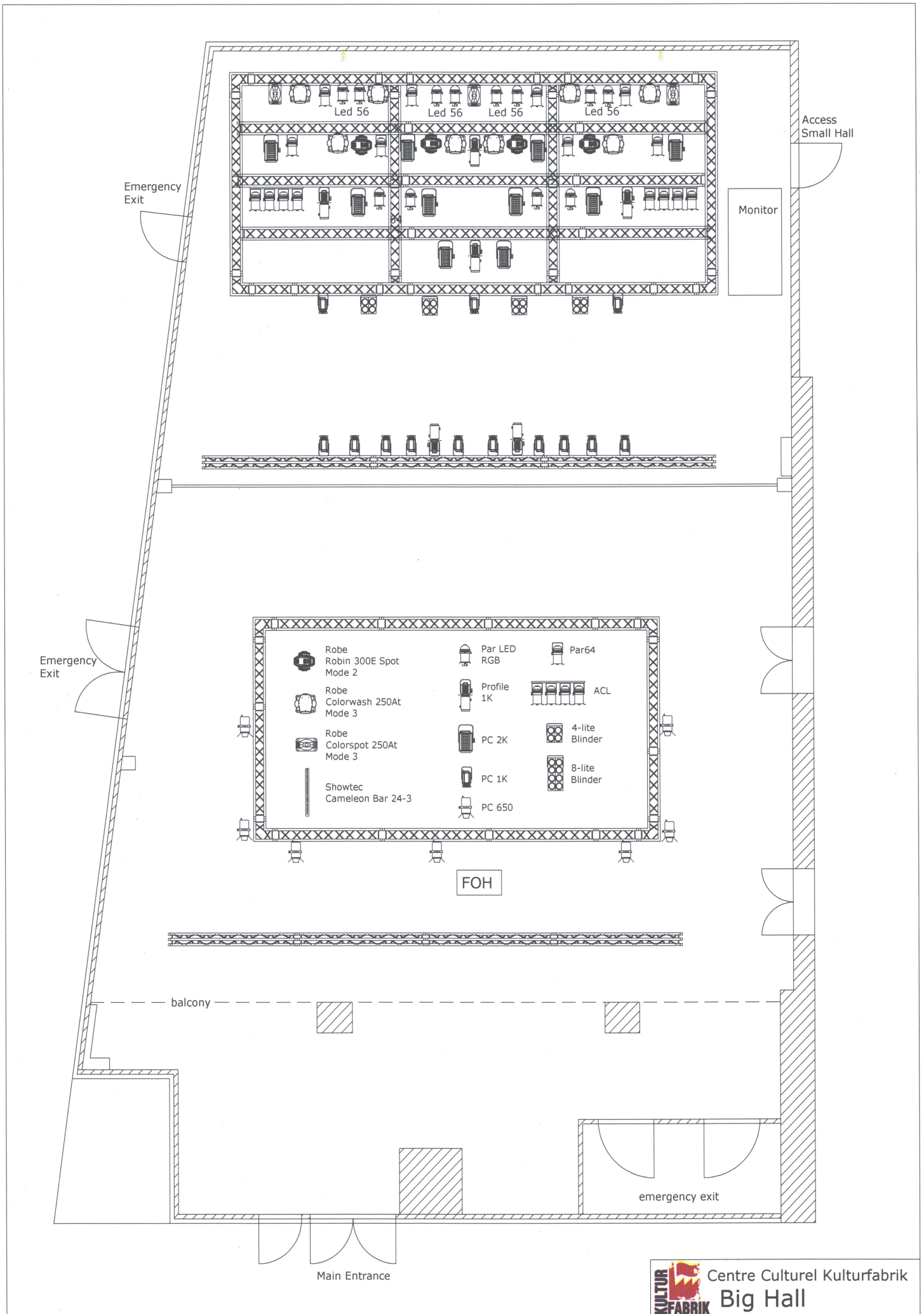
10x ADB PC 1kW
2x ADB Profiles 1kW

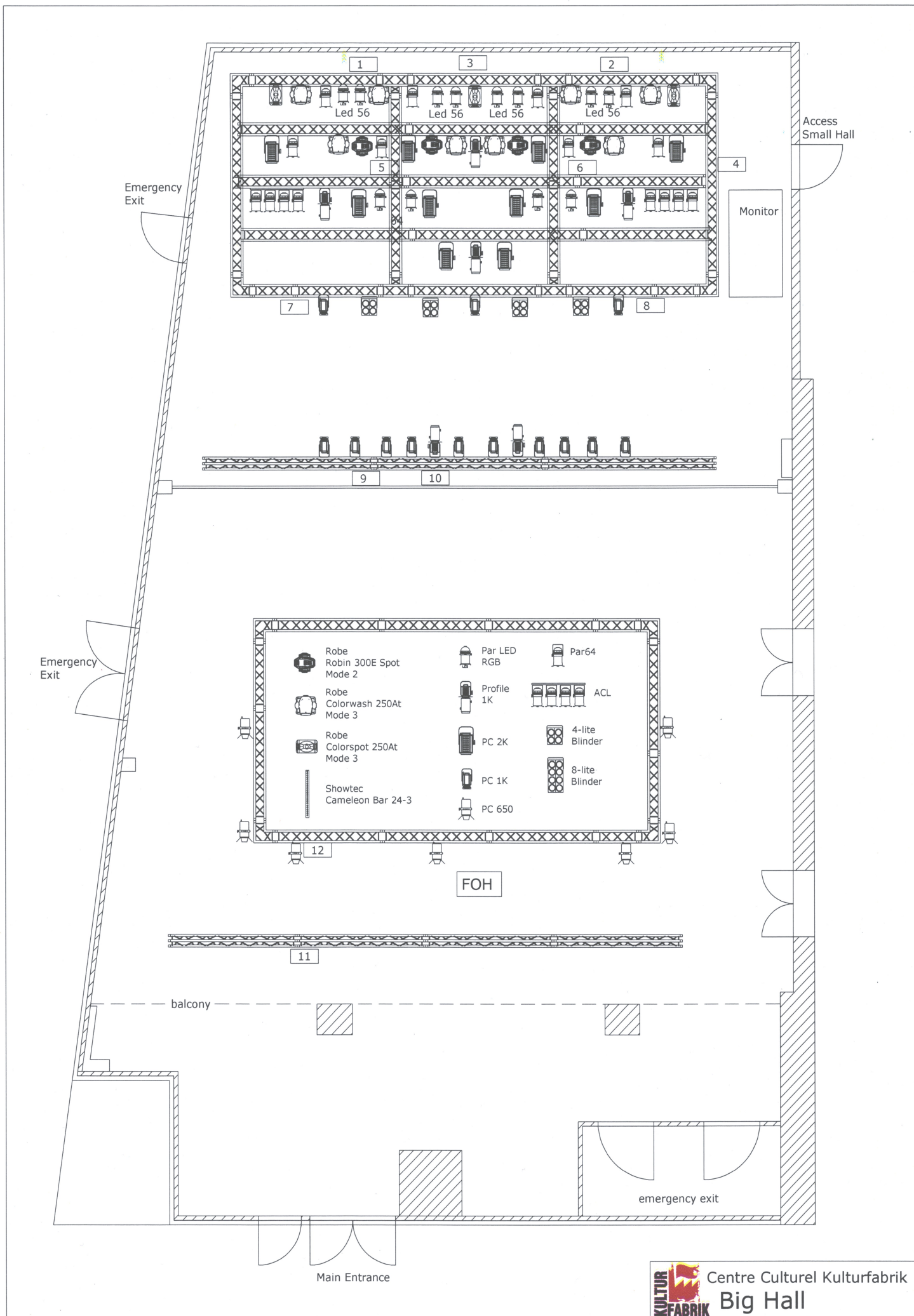
Light on the Hall Truss / See Light Plan:

7x Strand PC 650W (Hall Light)

Light on the Back Hall Truss / See Light Plan:

4x ADB PC 1kW (Hall Light)





Patch Kufa

DMX-Link A:

Dimmer: 001-060
Hazer 2: 094
Hazer 1: 095 / 096

Showtec Spectral M800 MKII IPX, mode Tour (9dmx):

LED Floor:

Teclumen Mini Pony Profiles LED:

LED Profiles:

Robe Robin 300E Spot, mode 2 (25dmx):

Spot 300 Floor: 200 / 225

Robe Colorspot 250at, mode 3 (20dmx):

Spot 250 Floor: 260 / 280

Showtec Cameleon Bar 24-3 (5dmx):

LED Bar Floor:

Robe Colorwash 250at, mode 3 (20dmx):

Wash Floor: 300 / 320 / 340 / 360

DMX-Link B:

Litecraft LED PAR AT3, mode 4 (7dmx):

LED Stage 1: 001 / 008 / 015 / 022 / 029 / 036 / 043 / 050

LED Stage 2: 057 / 064 / 085 / 092

Robe Colorwash 250at, mode 3 (20dmx):

Wash Stage: 100 / 120 / 140 / 160 / 180 / 200 / 220 / 240

Robe Colorspot 250at, mode 3 (20dmx):

Spot 250 Stage: 260 / 280 / 300

Robe Robin 300E Spot, mode 2 (25dmx):

Spot 300 Stage: 350 / 375 / 400 / 425

Dimmer – City:

Dimmer 1, Address A025:

12	10	5
		6

Dimmer 2, Address A001:

1		
2	7	Floor
		Floor

Dimmer 3, Address A049: Can be disconnected for Bang Your Head

8	9	3

Channel 3-6 are reserved for Kyan