

# **Light SPECS LIST / KULTURFABRIK /** **BIG VENUE:**

## **FOH – CONSOLE:**

**Avolites Titan Quartz V9.1**  
**Avolites Titan Wing / Extension**

## **Dimmer Racks:**

**3x ADB 24channels (3kW per Channel)**

## **Light on the Stage Truss / see Plan:**

**12x Robe Colorwash 250at**  
**5x Robe Colorspot 250at**  
**12x Litecraft LED Pars AT3**  
**9x ADB PC 2kW**  
**3x ADB PC 1kW**  
**8x Pars 1kW CP62**  
**1x Set of ACL**

## **Light on Floor:**

**6x Totem on the Sides (2m high)**

**6x Robe Robin 300E Spot (On the Totems)**

**4x Showtec MKII M800 LED Pars**

**6x Showtec Cameleon Bar 24-3 (Front Borders of the stage)**

**1x set of ACL**

## **Light on the Front Truss / see Plan:**

**5x Showtec MKII M800 LED PARS**

**4x ADB PC 1kW**

**2x ADB Profiles 1kW**

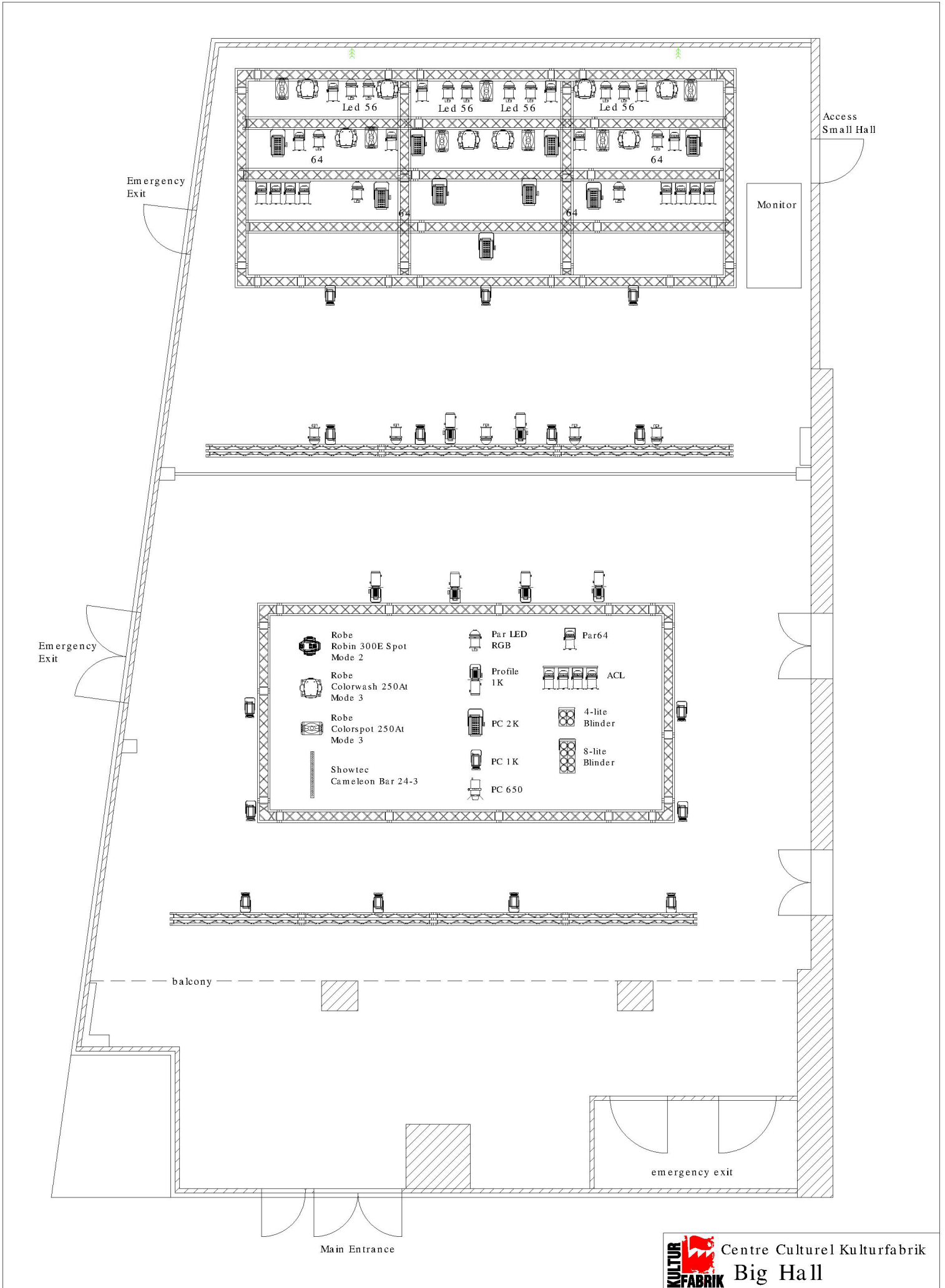
## **Light on the Hall Truss / see Plan:**

**4x ADB Profiles 1kW**

**4x ADB PC 1kW or Strand PC 650W (Hall Light)**

## **Light on the Back Hall Truss / See Plan:**

**4x ADB PC 1kW (Hall Light)**



# Patch Kufa

## DMX-Link A:

Dimmer: 001-054  
Hazer 2: 094  
Hazer 1: 095 / 096

## Showtec Spectral M800 MKII IPX, mode Tour (9dmx):

LED Front: 101 / 110 / 119 / 128 / 137  
LED Floor: 146 / 155 / 164 / 173

## Robe Colorwash 250at, mode 3 (20dmx):

Wash Floor: 200 / 220 / 240 / 260

## Robe Robin 300E Spot, mode 2 (25dmx):

Spot 300 Floor: 300 / 325 / 350 / 375 / 400 / 425

## Showtec Cameleon Bar 24-3 (5dmx):

LED Bar Floor: 450 / 455 / 460 / 465 / 470 / 475

## DMX-Link B:

## Litecraft LED PAR AT3, mode 4 (7dmx):

LED Stage 1: 001 / 008 / 015 / 022 / 029 / 036 / 043 / 050  
LED Stage 2: 057 / 064 / 071 / 078 / 085 / 092

## Robe Colorwash 250at, mode 3 (20dmx):

Wash Stage: 100 / 120 / 140 / 160 / 180 / 200 / 220 / 240

## Robe Colorspot 250at, mode 3 (20dmx):

Spot 250 Stage: 260 / 280 / 300 / 320 / 340

# Dimmer – City:

## Dimmer 1, Address A025:

11		
12	10	5
		6

## Dimmer 2, Address A001:

1		
2	7	Floor
		Floor

## Dimmer 3, Address A049:

8	9	